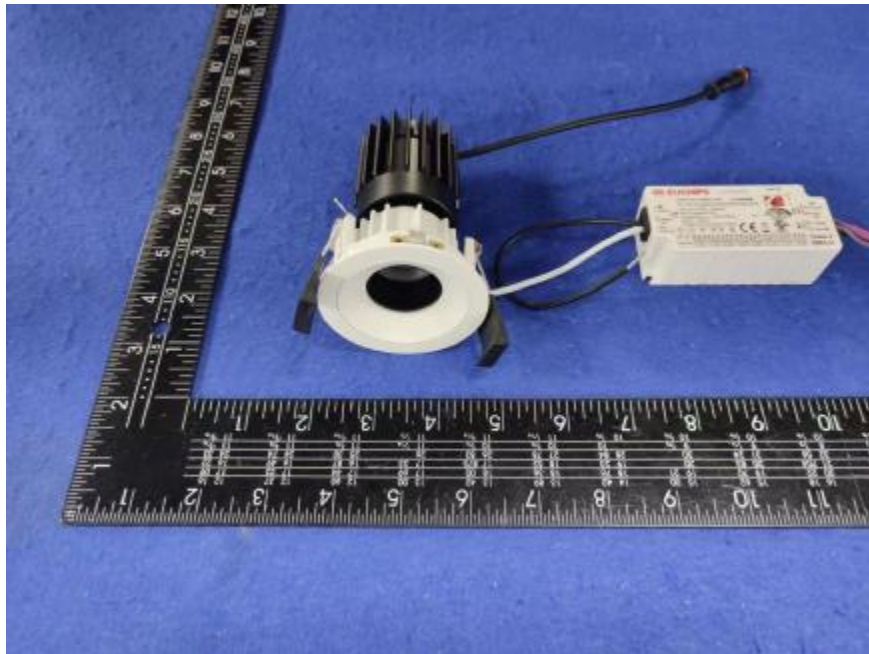


Luminaire Photograph



Light Output Ratio:	64.9%	
Luminaire Power:	12.18 W	
SHR Nominal:	0.50	Calculated using the TM5
SHR Maximum:	0.70	fine grid method.

C Range: 0 - 360DEG
C Interval: 30.0DEG
Test Speed: HIGH
Temperature: 25.3 °C
Operators: zoe
Test Date: 2023-12-8

Range: 0 - 180DEG
Interval: 1.0DEG
Test System: EVERFINE GO-SPEX500_V1 SYSTEM V2.00.461
Humidity: 65.0%
Test Distance: 3.160m [K=1.0000]
Remarks: LAMP: CMA1306-0000-000N0U0A30G Ra:90
LENS: PM-1084C 50R
DRIVER: PUP10A-1WMC-350 260mA
30minutes warm-up

LUMINOUS INTENSITY DISTRIBUTION DIAGRAM

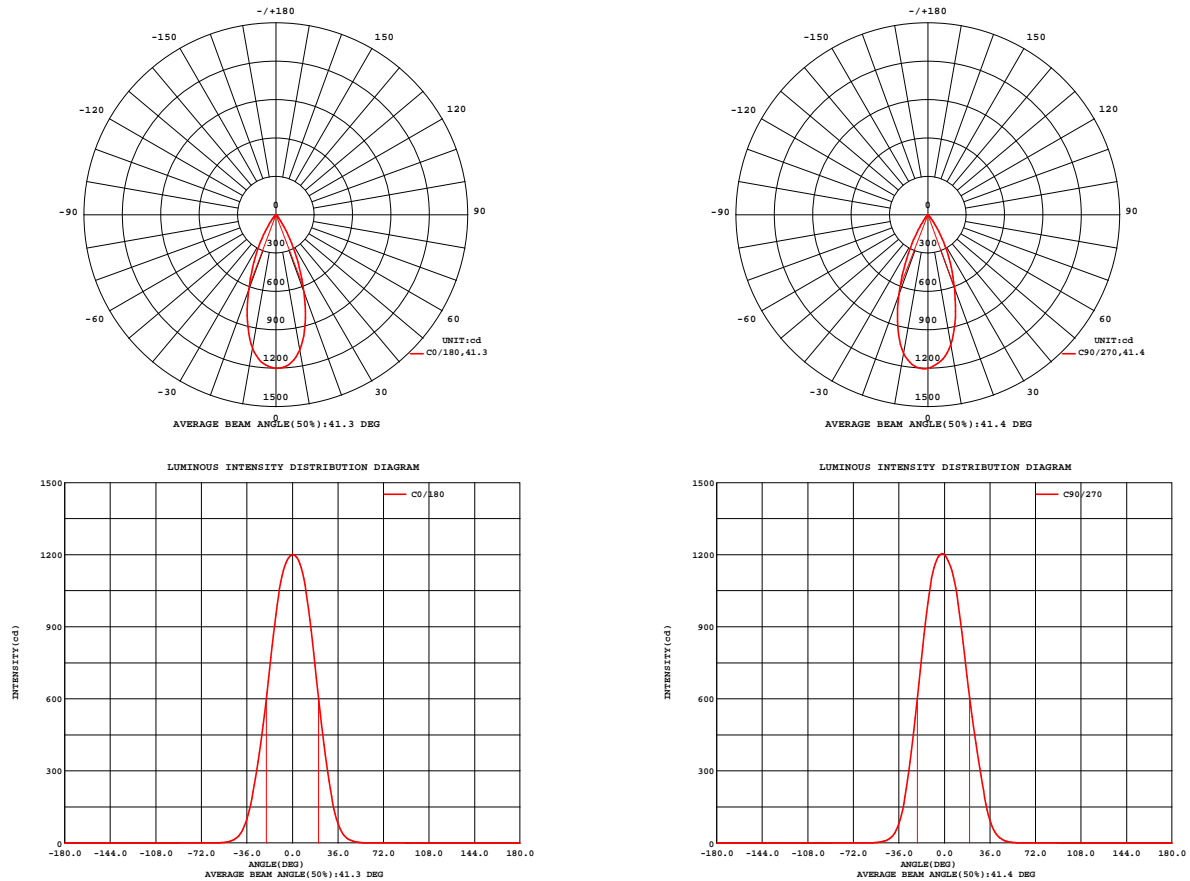


Fig. C0/C180

Fig. C90/C270

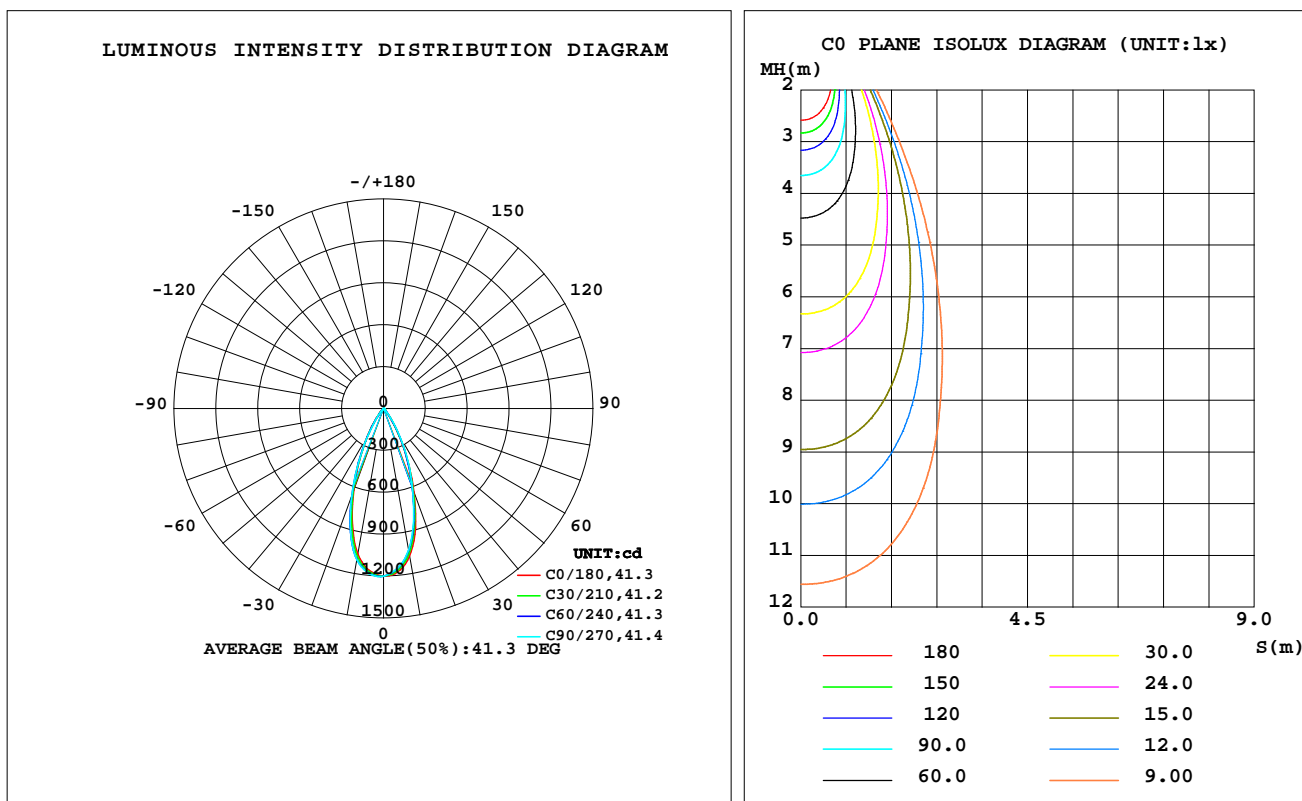
C Range: 0 - 360DEG
C Interval: 30.0DEG
Test Speed: HIGH
Temperature:25.3 °C
Operators:zoe
Test Date:2023-12-8

Range: 0 - 180DEG
Interval: 1.0DEG
Test System:EVERFINE GO-SPEX500_V1 SYSTEM V2.00.461
Humidity:65.0%
Test Distance:3.160m [K=1.0000]
Remarks: LAMP:CMA1306-0000-000N0U0A30G Ra:90
LENS:PM-1084C 50R
DRIVER:PUP10A-1WMC-350 260mA
30minutes warm-up

LUMINAIRE PHOTOMETRIC TEST REPORT

Test:U:120.17V I:0.1022A P:12.177W PF:0.9899 Freq:59.98Hz Lamp Flux:959.178x1 lm		
NAME: 2318.116-LEA-13	TYPE:	WEIGHT:
SPEC.: 3000K	DIM.:	SERIAL No.: 2312081431
MFR.: RISE	SUR.: 0.00180864m2	Shielding Angle:

DATA OF LAMP		PHOTOMETRIC DATA Eff: 51.09 lm/W			
MODEL	CREE	I _{max} (cd)	1204	S/MH(C0/180)	0.67
NOMINAL POWER(W)	12	LOR(%)	64.9	S/MH(C90/270)	0.67
RATED VOLTAGE(V)	120	TOTAL FLUX(lm)	622.15	UP,DN(C0-180)	0.0,32.1
NOMINAL FLUX(lm)	959.178	CIE CLASS	DIRECT	UP,DN(C180-360)	0.0,32.8
LAMPS INSIDE	1	up(%)	0.0	CIBSE SHR NOM	0.50
TEST VOLTAGE(V)	120	down(%)	64.9	CIBSE SHR MAX	0.70



C Range: 0 - 360DEG
C Interval: 30.0DEG
Test Speed: HIGH
Temperature:25.3℃
Operators:zoe
Test Date:2023-12-8

Range: 0 - 180DEG
Interval: 1.0DEG
Test System:EVERFINE GO-SPEX500_V1 SYSTEM V2.00.461
Humidity:65.0%
Test Distance:3.160m [K=1.0000]
Remarks: LAMP:CMA1306-0000-000N0U0A30G Ra:90
LENS:PM-1084C 50R
DRIVER:PUP10A-1WMC-350 260mA
30minutes warm-up

ZONAL FLUX DIAGRAM

ZONAL FLUX DIAGRAM:

	C0	C45	C90	C135	C180	C225	C270	C315		zone	total	%lum,lamp
10	1074	1046	1031	1040	1059	1088	1101	1095	0- 10	108.4	108.4	17.4,11.3
20	638.7	612.5	606.7	607.0	624.2	652.3	666.7	653.6	10- 20	238.8	347.2	55.8,36.2
30	224.2	230.1	247.0	242.8	240.8	235.4	225.1	215.5	20- 30	188.1	535.3	86,55.8
40	38.25	42.72	46.06	48.14	47.64	41.22	35.23	33.99	30- 40	71.07	606.4	97.5,63.2
50	4.660	5.647	5.901	6.274	5.954	5.282	4.546	4.168	40- 50	13.59	620.0	99.6,64.6
60	0.5438	0.5584	0.5747	0.5907	0.5860	0.5314	0.5058	0.5139	50- 60	1.818	621.8	99.9,64.8
70	0.1292	0.1326	0.1387	0.1331	0.1282	0.1215	0.1161	0.1147	60- 70	0.2960	622.1	100,64.9
80	0.0248	0.0226	0.0319	0.0231	0.0238	0.0178	0.0196	0.0182	70- 80	0.0599	622.1	100,64.9
90	0	0	0	0	0	0	0	0	80- 90	0.0156	622.2	100,64.9
100	0	0	0	0	0	0	0	0	90-100	0	622.2	100,64.9
110	0	0	0	0	0	0	0	0	100-110	0	622.2	100,64.9
120	0	0	0	0	0	0	0	0	110-120	0	622.2	100,64.9
130	0	0	0	0	0	0	0	0	120-130	0	622.2	100,64.9
140	0	0	0	0	0	0	0	0	130-140	0	622.2	100,64.9
150	0	0	0	0	0	0	0	0	140-150	0	622.2	100,64.9
160	0	0	0	0	0	0	0	0	150-160	0	622.2	100,64.9
170	0	0	0	0	0	0	0	0	160-170	0	622.2	100,64.9
180	0	0	0	0	0	0	0	0	170-180	0	622.2	100,64.9
DEG	LUMINOUS INTENSITY:cd									UNIT:lm		

C Range: 0 - 360DEG
C Interval: 30.0DEG
Test Speed: HIGH
Temperature:25.3℃
Operators:zoe
Test Date:2023-12-8

Range: 0 - 180DEG
Interval: 1.0DEG
Test System:EVERFINE GO-SPEX500_V1 SYSTEM V2.00.461
Humidity:65.0%
Test Distance:3.160m [K=1.0000]
Remarks: LAMP:CMA1306-0000-000N0U0A30G Ra:90
LENS:PM-1084C 50R
DRIVER:PUP10A-1WMC-350 260mA
30minutes warm-up

LUMINANCE LIMITATION CURVES

Test:U:120.17V I:0.1022A P:12.177W PF:0.9899 Freq:59.98Hz
Lamp Flux:959.178x1 lm

NAME: 2318.116-LEA-13

TYPE:

WEIGHT:

SPEC.: 3000K

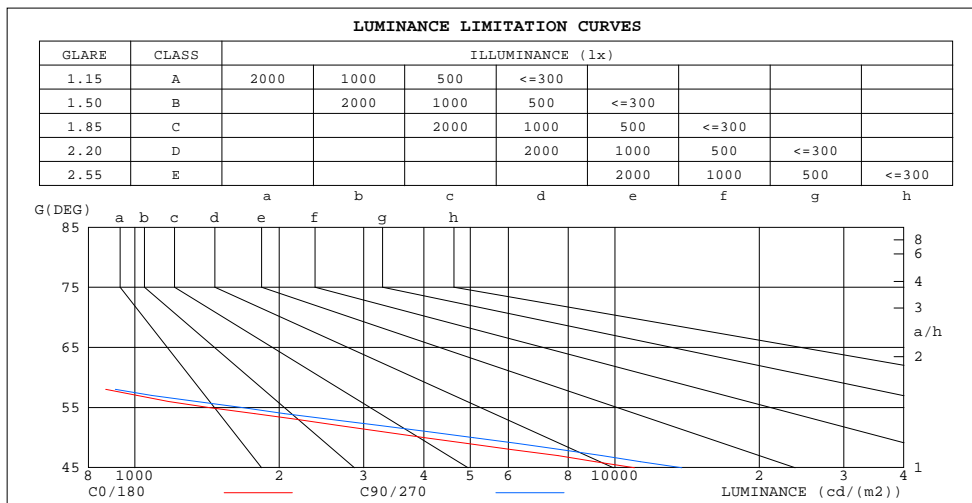
DIM.:

SERIAL No.: 2312081431

MFR.: RISE

SUR.: 0.00180864m2

Shielding Angle:



LUMINANCE cd/(m2)		
G(180)	C0/180	C90/270
85	120	128
80	79	102
75	112	121
70	209	224
65	372	393
60	602	635
55	1428	1676
50	4014	5075
45	10985	13783

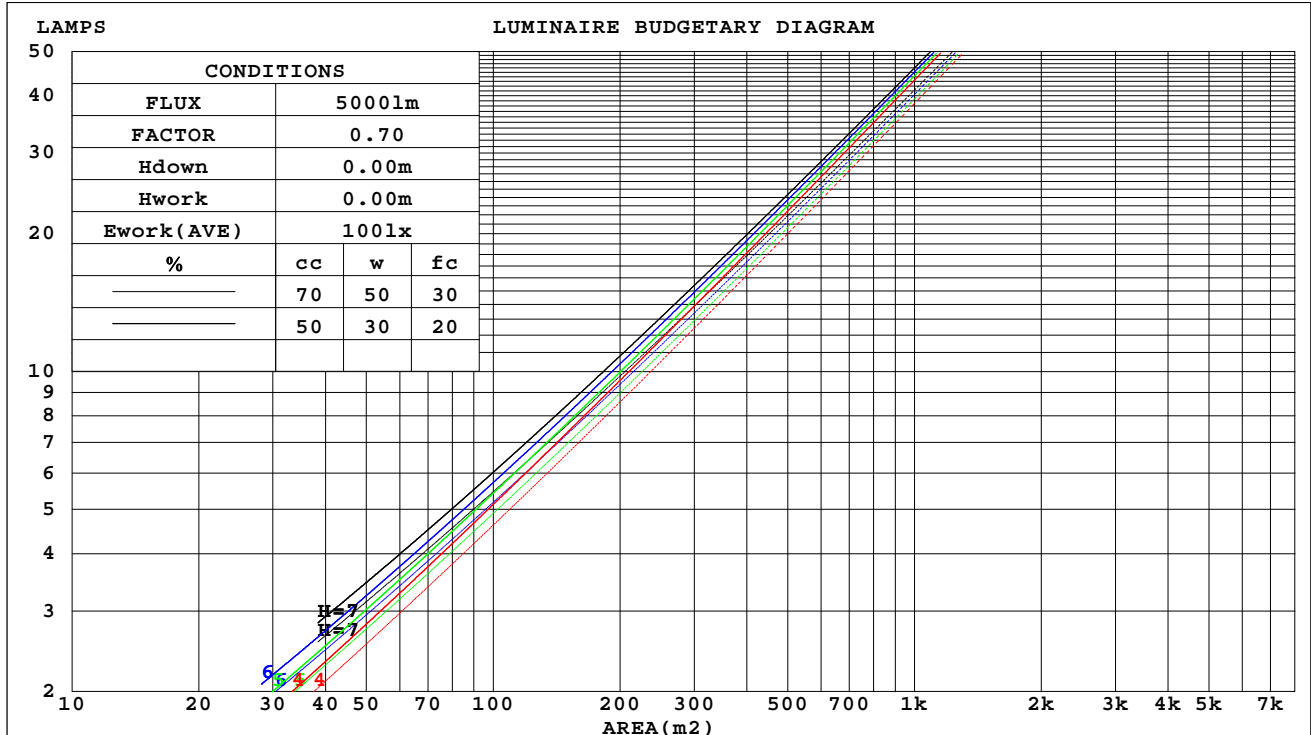
C Range: 0 - 360DEG
C Interval: 30.0DEG
Test Speed: HIGH
Temperature:25.3℃
Operators:zoe
Test Date:2023-12-8

Range: 0 - 180DEG
Interval: 1.0DEG
Test System:EVERFINE GO-SPEX500_V1 SYSTEM V2.00.461
Humidity:65.0%
Test Distance:3.160m [K=1.0000]
Remarks: LAMP:CMA1306-0000-000N0U0A30G Ra:90
LENS:PM-1084C 50R
DRIVER:PUP10A-1WMC-350 260mA
30minutes warm-up

CU AND LUMINAIRE BUDGETARY ESTIMATE DIAGRAM

Test:U:120.17V I:0.1022A P:12.177W PF:0.9899 Freq:59.98Hz Lamp Flux:959.178x1 lm		
NAME: 2318.116-LEA-13	TYPE:	WEIGHT:
SPEC.: 3000K	DIM.:	SERIAL No.: 2312081431
MFR.: RISE	SUR.: 0.00180864m2	Shielding Angle:

cc	80%			70%			50%			30%			10%			0
w	50%	30%	10%	50%	30%	10%	50%	30%	10%	50%	30%	10%	50%	30%	10%	0
fc	20%			20%			20%			20%			20%			0
RCR	RCR:Room Cavity Ratio															



C Range: 0 - 360DEG
C Interval: 30.0DEG
Test Speed: HIGH
Temperature:25.3℃
Operators:zoe
Test Date:2023-12-8

Range: 0 - 180DEG
Interval: 1.0DEG
Test System:EVERFINE GO-SPEX500_V1 SYSTEM V2.00.461
Humidity:65.0%
Test Distance:3.160m [K=1.0000]
Remarks: LAMP:CMA1306-0000-000N0U0A30G Ra:90
LENS:PM-1084C 50R
DRIVER:PUP10A-1WMC-350 260mA
30minutes warm-up

WEC AND CCEC

Test:U:120.17V I:0.1022A P:12.177W PF:0.9899 Freq:59.98Hz Lamp Flux:959.178x1 lm		
NAME: 2318.116-LEA-13	TYPE:	WEIGHT:
SPEC.: 3000K	DIM.:	SERIAL No.: 2312081431
MFR.: RISE	SUR.: 0.00180864m2	Shielding Angle:

cc	80%			70%			50%			30%			10%			0
w	50%	30%	10%	50%	30%	10%	50%	30%	10%	50%	30%	10%	50%	30%	10%	0
fc	20%			20%			20%			20%			20%			0
RCR	RCR:Room Cavity Ratio Wall Exitance Coefficients(WEC)															
0.0																
1.0	.103	.058	.019	.098	.056	.018	.090	.052	.017	.083	.048	.015	.076	.044	.014	
2.0	.097	.053	.016	.094	.052	.016	.087	.048	.015	.081	.045	.014	.075	.042	.013	
3.0	.092	.049	.015	.089	.048	.014	.083	.045	.014	.078	.043	.013	.073	.040	.013	
4.0	.087	.045	.013	.085	.044	.013	.080	.042	.013	.075	.040	.012	.071	.039	.012	
5.0	.083	.042	.012	.081	.042	.012	.077	.040	.012	.073	.038	.011	.069	.037	.011	
6.0	.079	.040	.011	.077	.039	.011	.074	.038	.011	.070	.036	.011	.067	.035	.010	
7.0	.076	.037	.011	.074	.037	.011	.071	.036	.010	.068	.035	.010	.065	.034	.010	
8.0	.073	.035	.010	.071	.035	.010	.068	.034	.010	.066	.033	.010	.063	.032	.009	
9.0	.070	.034	.009	.068	.033	.009	.066	.033	.009	.063	.032	.009	.061	.031	.009	
10.0	.067	.032	.009	.066	.032	.009	.064	.031	.009	.061	.030	.009	.059	.030	.009	

cc	80%			70%			50%			30%			10%			0
w	50%	30%	10%	50%	30%	10%	50%	30%	10%	50%	30%	10%	50%	30%	10%	0
fc	20%			20%			20%			20%			20%			0
RCR	RCR:Room Cavity Ratio Ceiling Cavity Exitance Coefficients(CCEC)															
0.0	.124	.124	.124	.106	.106	.106	.072	.072	.072	.041	.041	.041	.013	.013	.013	
1.0	.110	.102	.095	.094	.088	.082	.064	.060	.056	.037	.035	.033	.012	.011	.011	
2.0	.099	.086	.075	.085	.074	.065	.058	.051	.045	.034	.030	.026	.011	.010	.009	
3.0	.091	.074	.060	.078	.063	.052	.053	.044	.036	.031	.026	.021	.010	.008	.007	
4.0	.083	.064	.049	.072	.055	.042	.049	.038	.030	.028	.023	.018	.009	.007	.006	
5.0	.077	.056	.040	.066	.049	.035	.046	.034	.025	.027	.020	.015	.009	.006	.005	
6.0	.072	.050	.034	.062	.043	.030	.043	.030	.021	.025	.018	.012	.008	.006	.004	
7.0	.068	.045	.029	.058	.039	.025	.040	.027	.018	.023	.016	.011	.008	.005	.003	
8.0	.064	.041	.025	.055	.035	.022	.038	.025	.015	.022	.015	.009	.007	.005	.003	
9.0	.061	.037	.021	.052	.032	.019	.036	.023	.013	.021	.013	.008	.007	.004	.003	
10.0	.058	.034	.019	.050	.030	.016	.034	.021	.012	.020	.012	.007	.007	.004	.002	

C Range: 0 - 360DEG
C Interval: 30.0DEG
Test Speed: HIGH
Temperature:25.3℃
Operators:zoe
Test Date:2023-12-8

Range: 0 - 180DEG
Interval: 1.0DEG
Test System:EVERFINE GO-SPEX500_V1 SYSTEM V2.00.461
Humidity:65.0%
Test Distance:3.160m [K=1.0000]
Remarks: LAMP:CMA1306-0000-000N0U0A30G Ra:90
LENS:PM-1084C 50R
DRIVER:PUP10A-1WMC-350 260mA
30minutes warm-up

UGR(Unified Glare Rating) Table

Test:U:120.17V I:0.1022A P:12.177W PF:0.9899 Freq:59.98Hz Lamp Flux:959.178x1 lm										
NAME: 2318.116-LEA-13					TYPE:			WEIGHT:		
SPEC.: 3000K					DIM.:			SERIAL No.: 2312081431		
MFR.: RISE					SUR.: 0.00180864m2			Shielding Angle:		
ceiling/cavity	0.7	0.7	0.5	0.5	0.3	0.7	0.7	0.5	0.5	0.3
walls	0.5	0.3	0.5	0.3	0.3	0.5	0.3	0.5	0.3	0.3
working plane	0.2	0.2	0.2	0.2	0.2	0.2	0.2	0.2	0.2	0.2
Room dimensions	Viewed crosswise					Viewed endwise				
x = 2H y = 2H	16.1	16.9	16.3	17.1	17.3	16.7	17.5	16.9	17.7	17.8
3H	16.0	16.7	16.2	16.9	17.1	16.5	17.3	16.8	17.5	17.7
4H	15.9	16.6	16.2	16.8	17.0	16.4	17.1	16.7	17.4	17.6
6H	15.8	16.5	16.1	16.7	16.9	16.4	17.0	16.6	17.3	17.5
8H	15.8	16.4	16.1	16.6	16.9	16.3	16.9	16.6	17.2	17.5
12H	15.7	16.3	16.0	16.6	16.9	16.3	16.9	16.6	17.1	17.4
4H 2H	15.9	16.6	16.2	16.8	17.0	16.4	17.2	16.7	17.4	17.6
3H	15.7	16.3	16.0	16.6	16.9	16.3	16.9	16.6	17.1	17.4
4H	15.6	16.2	16.0	16.5	16.8	16.2	16.7	16.5	17.0	17.3
6H	15.5	16.0	15.9	16.3	16.7	16.1	16.6	16.4	16.9	17.2
8H	15.5	15.9	15.9	16.3	16.6	16.0	16.5	16.4	16.8	17.2
12H	15.4	15.8	15.8	16.2	16.6	16.0	16.4	16.4	16.8	17.1
8H 4H	15.5	15.9	15.9	16.3	16.6	16.0	16.5	16.4	16.8	17.2
6H	15.4	15.7	15.8	16.1	16.5	15.9	16.3	16.3	16.7	17.1
8H	15.3	15.6	15.7	16.1	16.5	15.9	16.2	16.3	16.6	17.0
12H	15.2	15.5	15.7	16.0	16.4	15.8	16.1	16.3	16.5	17.0
12H 4H	15.4	15.8	15.8	16.2	16.6	16.0	16.4	16.4	16.8	17.1
6H	15.3	15.6	15.7	16.1	16.5	15.9	16.2	16.3	16.6	17.0
8H	15.2	15.5	15.7	16.0	16.4	15.8	16.1	16.3	16.5	17.0
Variations with the observer position at spacings(CIE Pub.117):										
S = 1.0H	+ 3.6 / -18.1					+ 4.0 / -18.4				
1.5H	+ 6.0 / -14.5					+ 6.4 / -15.1				
2.0H	+ 6.9 / -12.6					+ 7.5 / -13.5				

CIE Pub.117, 959.2 lm Total Lamp Luminous Flux Correct (8log(F/F0) = -0.1)
Area: 0.00180864 m2

C Range: 0 - 360DEG
C Interval: 30.0DEG
Test Speed: HIGH
Temperature:25.3℃
Operators:zoe
Test Date:2023-12-8

Range: 0 - 180DEG
Interval: 1.0DEG
Test System:EVERFINE GO-SPEX500_V1 SYSTEM V2.00.461
Humidity:65.0%
Test Distance:3.160m [K=1.0000]
Remarks: LAMP:CMA1306-0000-000N0U0A30G Ra:90
LENS:PM-1084C 50R
DRIVER:PUP10A-1WMC-350 260mA
30minutes warm-up

UTILIZATION FACTORS TABLE

Test:U:120.17V I:0.1022A P:12.177W PF:0.9899 Freq:59.98Hz Lamp Flux:959.178x1 lm		
NAME: 2318.116-LEA-13	TYPE:	WEIGHT:
SPEC.: 3000K	DIM.:	SERIAL No.: 2312081431
MFR.: RISE	SUR.: 0.00180864m2	Shielding Angle:

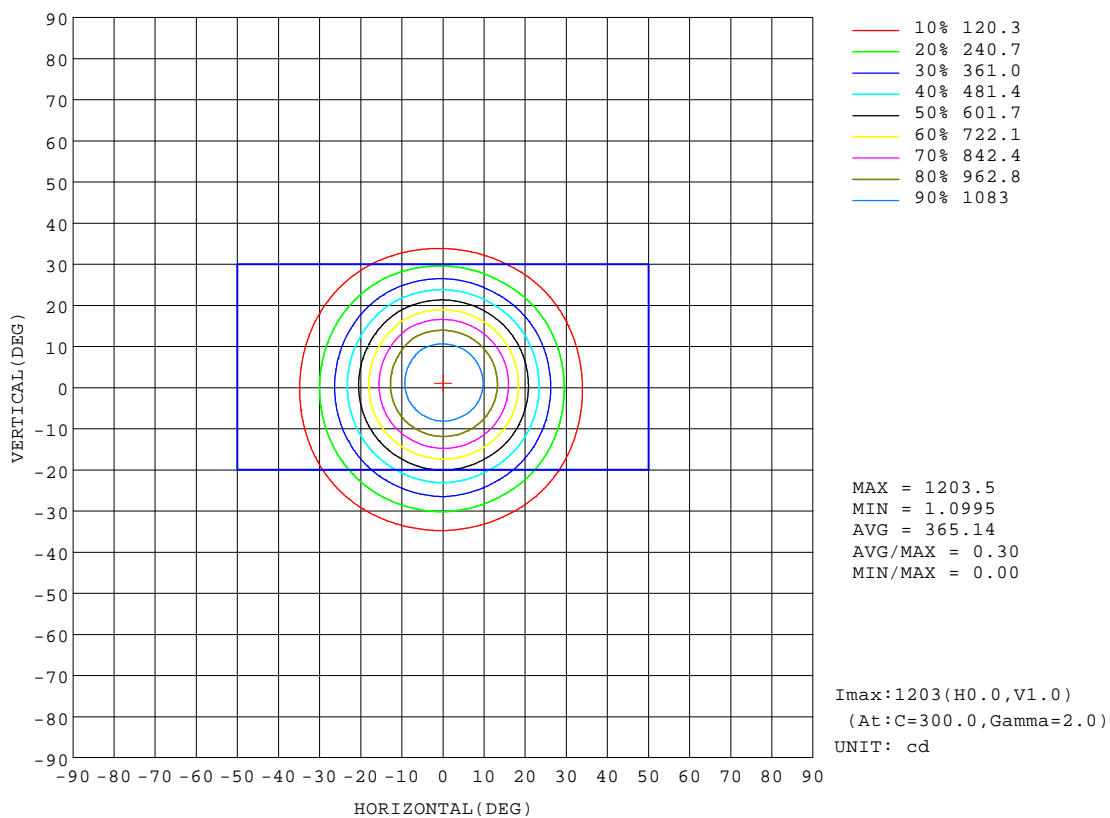
REFLECTANCE										
Ceiling	0.8	0.8	0.8	0.7	0.7	0.7	0.5	0.5	0.5	0
Walls	0.7	0.5	0.3	0.7	0.5	0.3	0.7	0.5	0.3	0
Working plane	0.2	0.2	0.2	0.2	0.2	0.2	0.2	0.2	0.2	0
ROOM INDEX	UTILIZATION FACTORS(PERCENT) $k(RI) \times RCR = 5$									
k = 0.60	58	55	52	58	54	52	58	54	52	50
0.80	63	59	57	63	59	57	62	59	57	55
1.00	66	62	60	65	62	60	64	62	60	57
1.25	68	65	63	67	64	63	66	64	62	59
1.50	70	67	65	69	66	64	67	65	64	61
2.00	71	69	67	70	68	66	68	67	65	62
2.50	72	70	68	71	69	67	69	67	66	62
3.00	73	71	69	72	70	69	70	68	67	63
4.00	74	73	71	73	71	70	71	69	69	64
5.00	75	74	73	74	72	71	71	70	69	65
ROOM INDEX	UF(total)									Direct
According to DIN EN 13032-2 2004			Suspended					SHRNOM = 1.25		

C Range: 0 - 360DEG
C Interval: 30.0DEG
Test Speed: HIGH
Temperature:25.3℃
Operators:zoe
Test Date:2023-12-8

Range: 0 - 180DEG
Interval: 1.0DEG
Test System:EVERFINE GO-SPEX500_V1 SYSTEM V2.00.461
Humidity:65.0%
Test Distance:3.160m [K=1.0000]
Remarks: LAMP:CMA1306-0000-000N0U0A30G Ra:90
LENS:PM-1084C 50R
DRIVER:PUP10A-1WMC-350 260mA
30minutes warm-up

ISOCANDELA DIAGRAM

Test:U:120.17V I:0.1022A P:12.177W PF:0.9899 Freq:59.98Hz Lamp Flux:959.178x1 lm		
NAME: 2318.116-LEA-13	TYPE:	WEIGHT:
SPEC.: 3000K	DIM.:	SERIAL No.: 2312081431
MFR.: RISE	SUR.: 0.00180864m2	Shielding Angle:

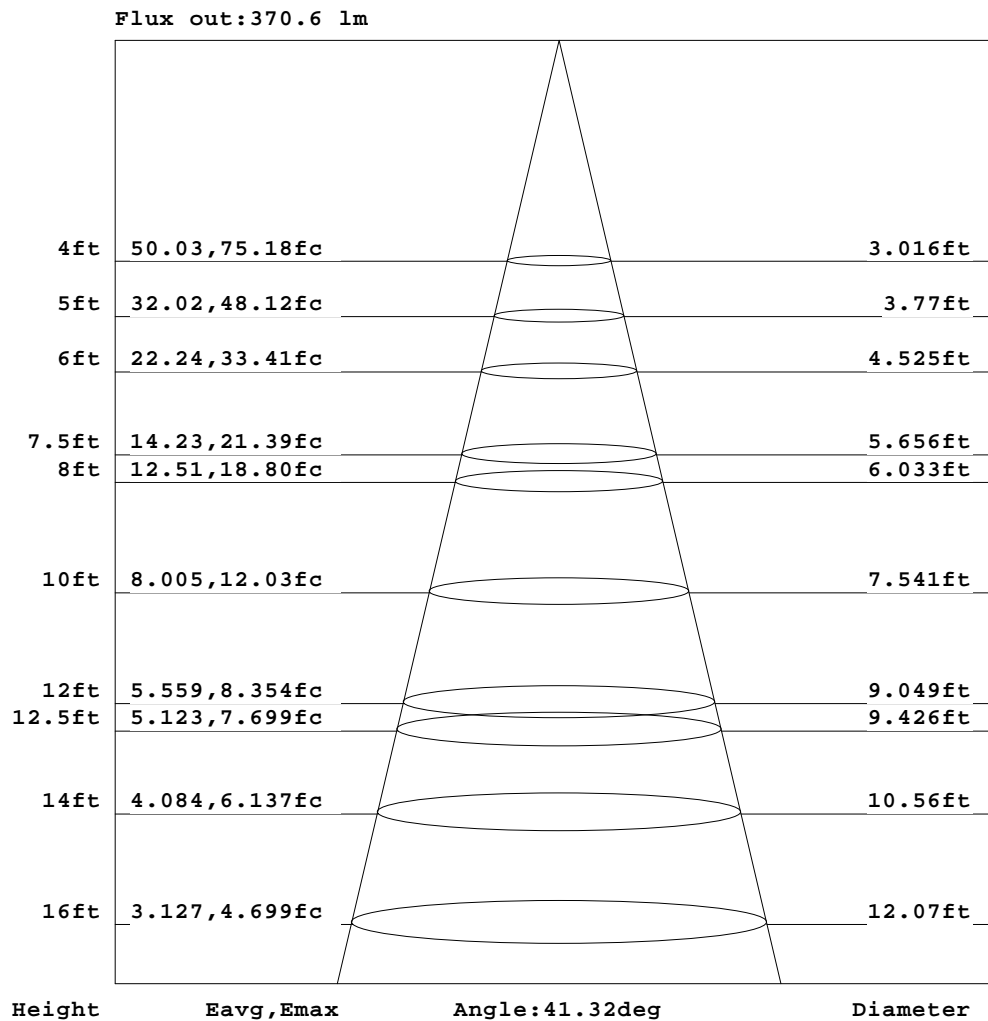


C Range: 0 - 360DEG
C Interval: 30.0DEG
Test Speed: HIGH
Temperature: 25.3 °C
Operators: zoe
Test Date: 2023-12-8

Range: 0 - 180DEG
Interval: 1.0DEG
Test System: EVERFINE GO-SPEX500_V1 SYSTEM V2.00.461
Humidity: 65.0%
Test Distance: 3.160m [K=1.0000]
Remarks: LAMP: CMA1306-0000-000N0U0A30G Ra: 90
LENS: PM-1084C 50R
DRIVER: PUP10A-1WMC-350 260mA
30minutes warm-up

AAI Figure

Test:U:120.17V I:0.1022A P:12.177W PF:0.9899 Freq:59.98Hz Lamp Flux:959.178x1 lm		
NAME: 2318.116-LEA-13	TYPE:	WEIGHT:
SPEC.: 3000K	DIM.:	SERIAL No.: 2312081431
MFR.: RISE	SUR.: 0.00180864m2	Shielding Angle:



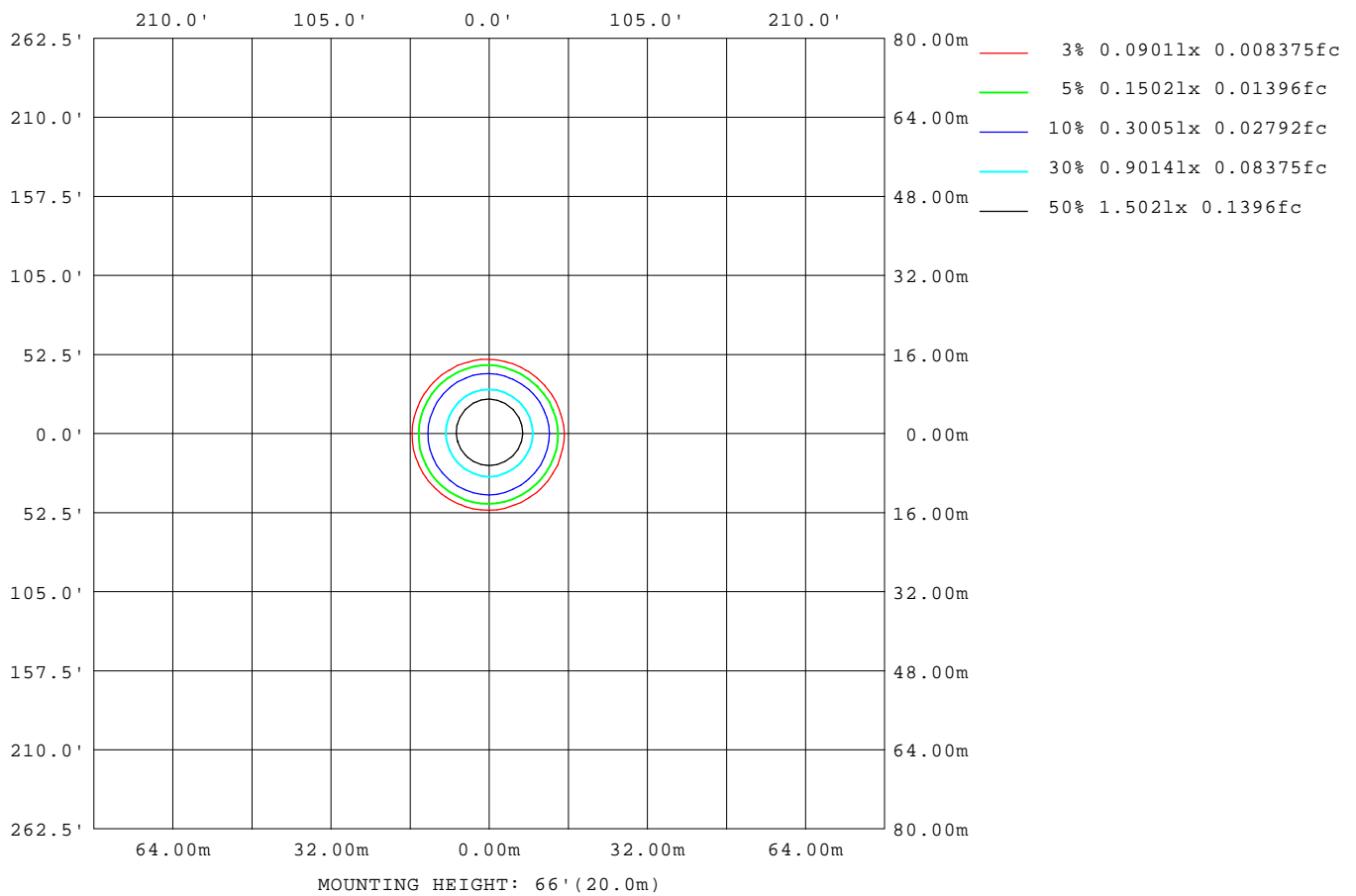
Note: The Curves indicate the illuminated area and the average illumination when the luminaire is at different distance.

C Range: 0 - 360DEG
C Interval: 30.0DEG
Test Speed: HIGH
Temperature: 25.3 °C
Operators: zoe
Test Date: 2023-12-8

Range: 0 - 180DEG
Interval: 1.0DEG
Test System: EVERFINE GO-SPEX500_V1 SYSTEM V2.00.461
Humidity: 65.0%
Test Distance: 3.160m [K=1.0000]
Remarks: LAMP: CMA1306-0000-000N0U0A30G Ra: 90
LENS: PM-1084C 50R
DRIVER: PUP10A-1WMC-350 260mA
30minutes warm-up

ISOLUX DIAGRAM

Test:U:120.17V I:0.1022A P:12.177W PF:0.9899 Freq:59.98Hz Lamp Flux:959.178x1 lm		
NAME: 2318.116-LEA-13	TYPE:	WEIGHT:
SPEC.: 3000K	DIM.:	SERIAL No.: 2312081431
MFR.: RISE	SUR.: 0.00180864m2	Shielding Angle:



C Range: 0 - 360DEG
C Interval: 30.0DEG
Test Speed: HIGH
Temperature:25.3°C
Operators:zoe
Test Date:2023-12-8

Range: 0 - 180DEG
Interval: 1.0DEG
Test System:EVERFINE GO-SPEX500_V1 SYSTEM V2.00.461
Humidity:65.0%
Test Distance:3.160m [K=1.0000]
Remarks: LAMP:CMA1306-0000-000N0U0A30G Ra:90
LENS:PM-1084C 50R
DRIVER:PUP10A-1WMC-350 260mA
30minutes warm-up

LED Avg.L Report

Test:U:120.17V I:0.1022A P:12.177W PF:0.9899 Freq:59.98Hz Lamp Flux:959.178x1 lm		
NAME: 2318.116-LEA-13	TYPE:	WEIGHT:
SPEC.: 3000K	DIM.:	SERIAL No.: 2312081431
MFR.: RISE	SUR.: 0.00180864m2	Shielding Angle:

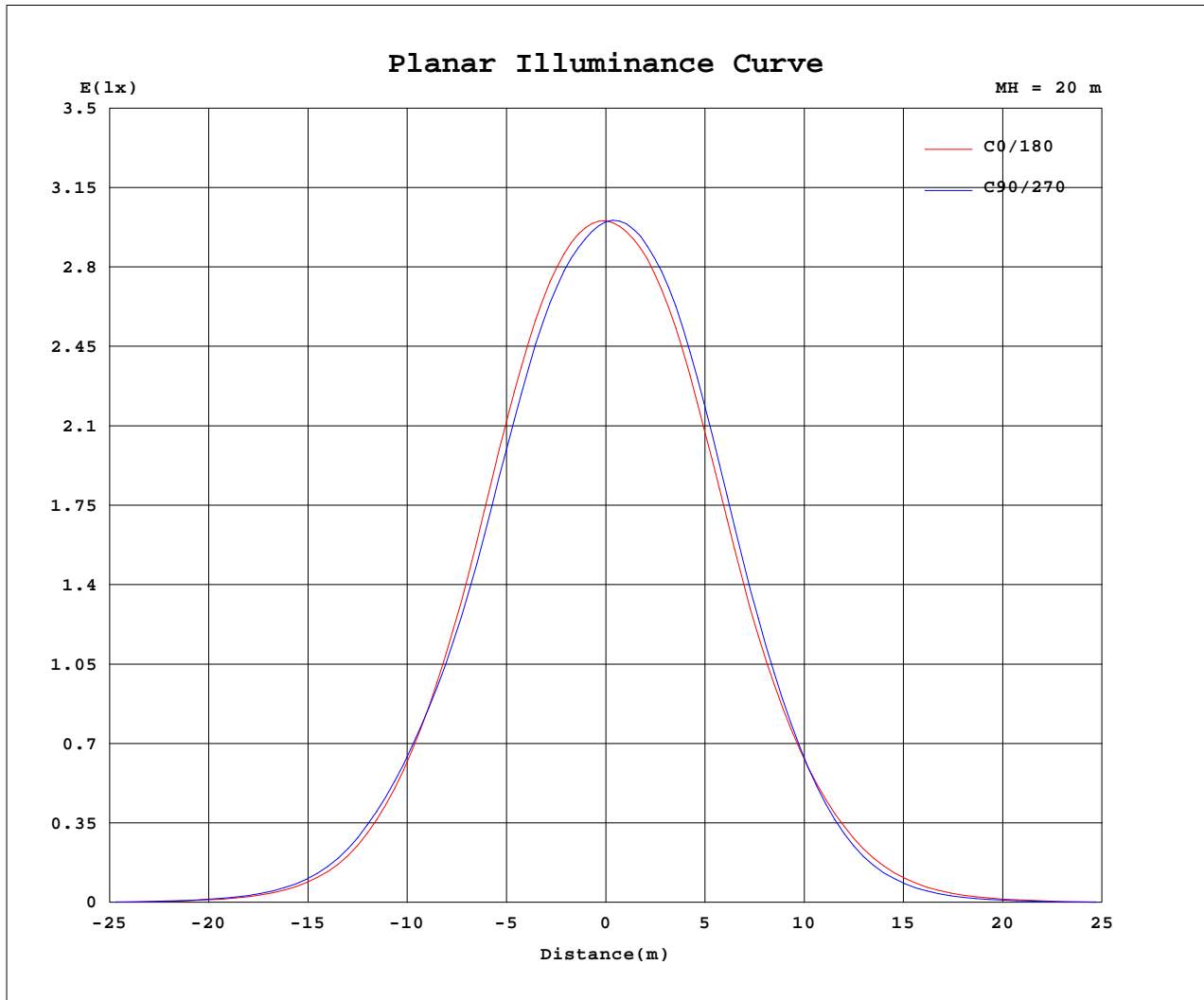
AvgL	cd/m2
L_0~180(65)av	375
L_0~180(75)av	112
L_0~180(85)av	117
L_90~270(65)av	370
L_90~270(75)av	108
L_90~270(85)av	108
L_45(65)av	366
L_45(75)av	100
L_45(85)av	77

Standard: GB/T 29293-2012

C Range: 0 - 360DEG
C Interval: 30.0DEG
Test Speed: HIGH
Temperature:25.3℃
Operators:zoe
Test Date:2023-12-8

Range: 0 - 180DEG
Interval: 1.0DEG
Test System:EVERFINE GO-SPEX500_V1 SYSTEM V2.00.461
Humidity:65.0%
Test Distance:3.160m [K=1.0000]
Remarks: LAMP:CMA1306-0000-000N0U0A30G Ra:90
LENS:PM-1084C 50R
DRIVER:PUP10A-1WMC-350 260mA
30minutes warm-up

Planar Illuminance Curve



C Range: 0 - 360DEG
 C Interval: 30.0DEG
 Test Speed: HIGH
 Temperature: 25.3 °C
 Operators: zoe
 Test Date: 2023-12-8

Range: 0 - 180DEG
 Interval: 1.0DEG
 Test System: EVERFINE GO-SPEX500_V1 SYSTEM V2.00.461
 Humidity: 65.0%
 Test Distance: 3.160m [K=1.0000]
 Remarks: LAMP: CMA1306-0000-000N0U0A30G Ra:90
 LENS: PM-1084C 50R
 DRIVER: PUP10A-1WMC-350 260mA
 30minutes warm-up



LUMINOUS DISTRIBUTION INTENSITY DATA

Test:U:120.17V I:0.1022A P:12.177W PF:0.9899 Freq:59.98Hz Lamp Flux:959.178x1 lm		
NAME: 2318.116-LEA-13	TYPE:	WEIGHT:
SPEC.: 3000K	DIM.:	SERIAL No.: 2312081431
MFR.: RISE	SUR.: 0.00180864m2	Shielding Angle:

Table--1

UNIT: cd

C(DEG) (DEG)	0	30	60	90	120	150	180	210	240	270	300	330						
0	1200	1200	1200	1200	1200	1200	1200	1200	1200	1200	1200	1200						
5	1175	1164	1151	1149	1149	1156	1165	1175	1184	1189	1188	1182						
10	1074	1055	1036	1031	1033	1047	1059	1077	1099	1101	1100	1090						
15	886	864	841	834	835	852	865	884	919	915	911	903						
20	639	623	602	607	602	612	624	638	667	667	657	650						
25	410	405	400	415	406	407	411	415	429	425	410	413						
30	224	228	232	247	243	242	241	236	235	225	212	219						
35	99.5	104	107	116	117	120	117	111	104	95.9	89.4	93.2						
40	38.3	41.9	43.5	46.1	47.6	48.7	47.6	43.1	39.3	35.2	33.5	34.5						
45	14.0	16.1	17.2	17.6	17.9	18.8	18.0	15.5	14.3	12.8	12.1	12.4						
50	4.66	5.48	5.82	5.90	6.11	6.44	5.95	5.41	5.15	4.55	4.20	4.13						
55	1.48	1.63	1.66	1.74	1.81	1.92	1.79	1.70	1.60	1.44	1.38	1.37						
60	0.54	0.55	0.56	0.57	0.58	0.60	0.59	0.54	0.52	0.51	0.51	0.52						
65	0.28	0.29	0.29	0.30	0.30	0.30	0.29	0.28	0.27	0.26	0.26	0.27						
70	0.13	0.13	0.13	0.14	0.13	0.13	0.13	0.12	0.12	0.12	0.11	0.12						
75	0.05	0.05	0.05	0.06	0.05	0.05	0.05	0.05	0.05	0.04	0.04	0.04						
80	0.02	0.02	0.02	0.03	0.02	0.02	0.02	0.02	0.02	0.02	0.02	0.02						
85	0.02	0.01	0.02	0.02	0.01	0.01	0.02	0.01	0.01	0.01	0.01	0.01						
90	0.00	0.00	0.00	0.00	0.00	0.00	0.00	0.00	0.00	0.00	0.00	0.00						
95	0.00	0.00	0.00	0.00	0.00	0.00	0.00	0.00	0.00	0.00	0.00	0.00						
100	0.00	0.00	0.00	0.00	0.00	0.00	0.00	0.00	0.00	0.00	0.00	0.00						
105	0.00	0.00	0.00	0.00	0.00	0.00	0.00	0.00	0.00	0.00	0.00	0.00						
110	0.00	0.00	0.00	0.00	0.00	0.00	0.00	0.00	0.00	0.00	0.00	0.00						
115	0.00	0.00	0.00	0.00	0.00	0.00	0.00	0.00	0.00	0.00	0.00	0.00						
120	0.00	0.00	0.00	0.00	0.00	0.00	0.00	0.00	0.00	0.00	0.00	0.00						
125	0.00	0.00	0.00	0.00	0.00	0.00	0.00	0.00	0.00	0.00	0.00	0.00						
130	0.00	0.00	0.00	0.00	0.00	0.00	0.00	0.00	0.00	0.00	0.00	0.00						
135	0.00	0.00	0.00	0.00	0.00	0.00	0.00	0.00	0.00	0.00	0.00	0.00						
140	0.00	0.00	0.00	0.00	0.00	0.00	0.00	0.00	0.00	0.00	0.00	0.00						
145	0.00	0.00	0.00	0.00	0.00	0.00	0.00	0.00	0.00	0.00	0.00	0.00						
150	0.00	0.00	0.00	0.00	0.00	0.00	0.00	0.00	0.00	0.00	0.00	0.00						
155	0.00	0.00	0.00	0.00	0.00	0.00	0.00	0.00	0.00	0.00	0.00	0.00						
160	0.00	0.00	0.00	0.00	0.00	0.00	0.00	0.00	0.00	0.00	0.00	0.00						
165	0.00	0.00	0.00	0.00	0.00	0.00	0.00	0.00	0.00	0.00	0.00	0.00						
170	0.00	0.00	0.00	0.00	0.00	0.00	0.00	0.00	0.00	0.00	0.00	0.00						
175	0.00	0.00	0.00	0.00	0.00	0.00	0.00	0.00	0.00	0.00	0.00	0.00						
180	0.00	0.00	0.00	0.00	0.00	0.00	0.00	0.00	0.00	0.00	0.00	0.00						

C Range: 0 - 360DEG
C Interval: 30.0DEG
Test Speed: HIGH
Temperature:25.3℃
Operators:zoe
Test Date:2023-12-8

Range: 0 - 180DEG
Interval: 1.0DEG
Test System:EVERFINE GO-SPEX500_V1 SYSTEM V2.00.461
Humidity:65.0%
Test Distance:3.160m [K=1.0000]
Remarks: LAMP:CMA1306-0000-000N0U0A30G Ra:90
LENS:PM-1084C 50R
DRIVER:PUP10A-1WMC-350 260mA
30minutes warm-up